

**Between Wars...**

# **ECONOMIC ISSUES LEADING TO THE GREAT DEPRESSION**

- **WWI devastated European economies**
- **Germany couldn't pay reparations to G.B. & France**
  - **So G.B. & France could not pay U.S.**
- **War induced inflation**
- **Overproduction of agriculture—decline in prices**
  - **Farmers borrowed to purchase farm equipment**
  - **Caused lower prices on crops from Africa & Latin America**



# THE GREAT DEPRESSION

- **Banks began to fail**
- **1929—stock market & banks crashed in U.S.**
  - **U.S. unable to continue its loans to Europe**
- **Global trade diminished—massive unemployment in Europe, U.S., Japan, Latin America**
  - **1/3 of all blue-collar workers unemployed in West**
- **New social welfare programs organized by gov.**
- **Italy & Germany—fascism developed**
- **Soviet Union not really affected by depression**
  - **Stalin said it was a result of capitalism & imperialism**

**FREE  
SOUP COFFEE & DOUGHNUTS  
FOR THE UNEMPLOYED**

**FREE SOUP  
&**

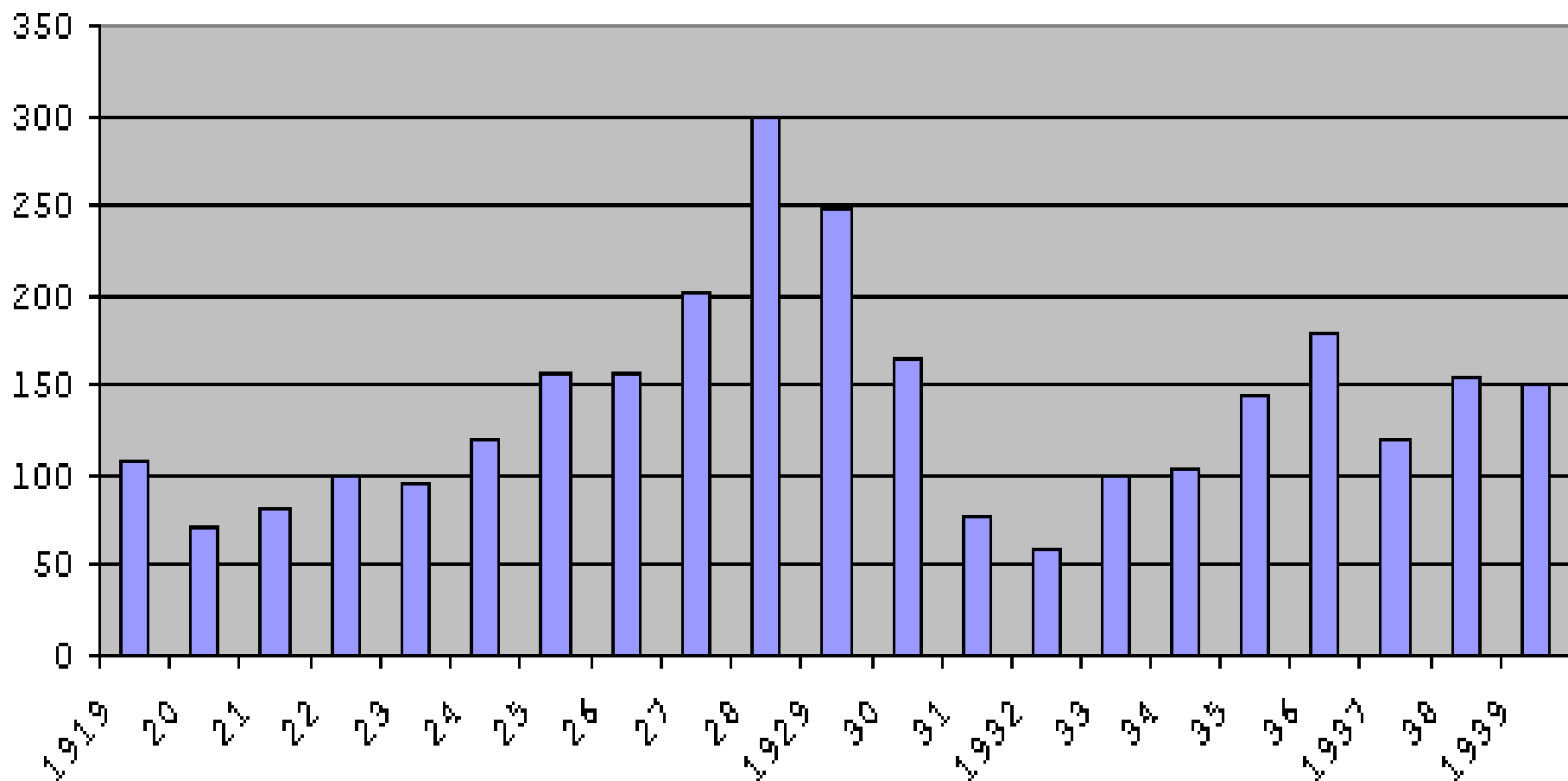
**HORA  
BAILIFF**

**PARKING 25**



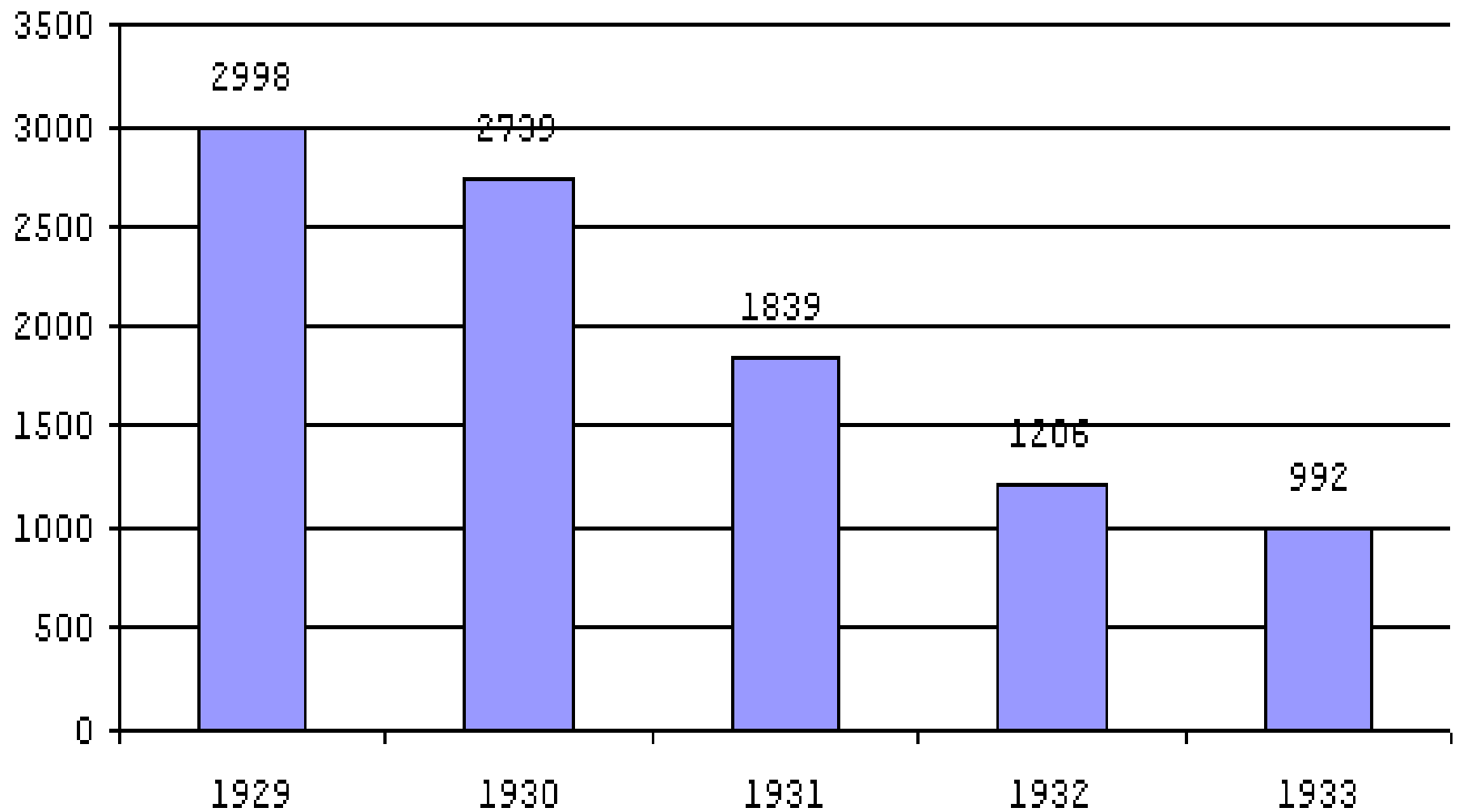
# The Dow Jones Industrial Average

## Year-end close 1919-1939



**The Dow did not close above its 1929 high of 381.17 until  
November 23, 1954!**

## Plummeting World Trade



Based on Charles Kindleberger, "The World in Depression 1929-1939"

# German Inflation

Item	1918	1922	Summer 1923	Nov. 1923
Meat (1 lb.)	2	1,200	90,000	3,200,000,000,000
Potatoes (1 lb.)	.12	80	2,000	50,000,000,000
1 Egg	.25	180	5,000	80,000,000,000
Butter (1 lb.)	3	2,000	150,000	6,000,000,000,000



# Czar Nicholas and Alexandria





# Romanov Family



Nicholas

Anastasia

Alexi

# **Lenin speaking to a massive Petrograd crowd on behalf of the Communist Revolution**

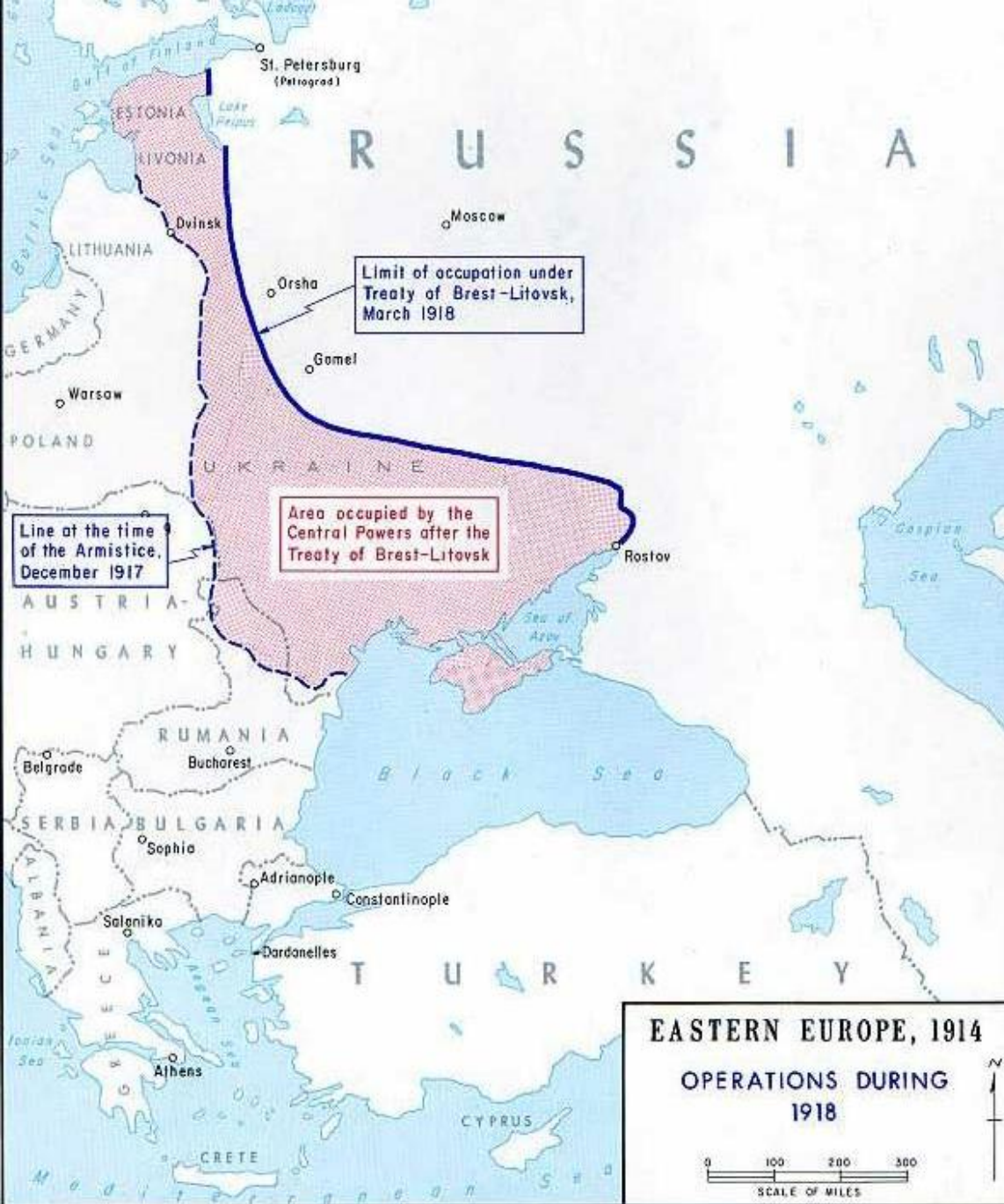




**The signing of the Brest-Litovsk Treaty.  
The treaty took away 1/3 of Russia's population, 1/2 of her  
industry and 9/10 of her coal mines.**



# Treaty of Brest-Litovsk







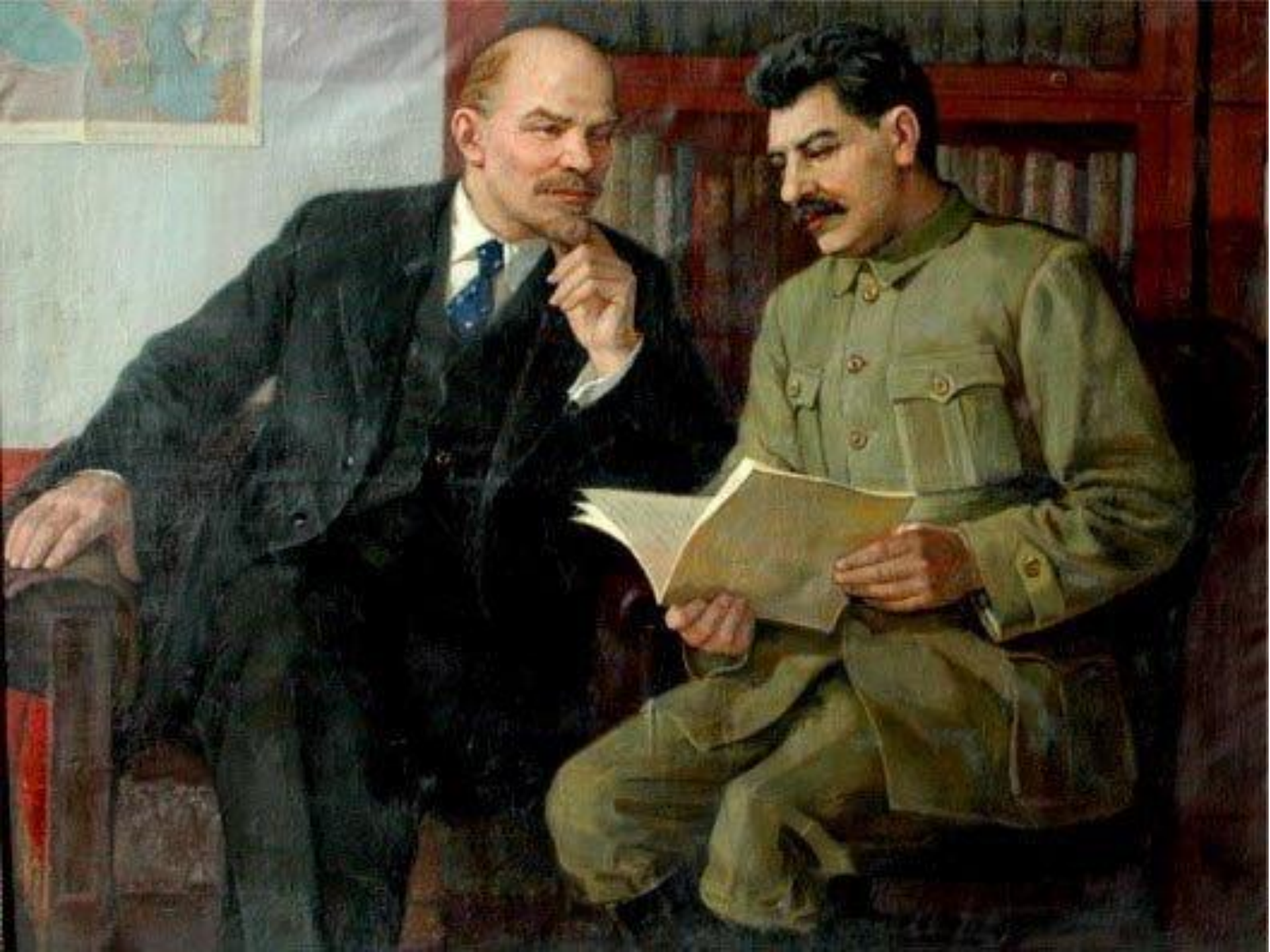
## Russian Revolution and Civil War, 1905–1922



### GEOGRAPHY SKILLBUILDER: Interpreting Maps

- 1. Region** What was the extent (north to south, east to west) of the Bolshevik territory in 1919?
- 2. Region** Which European countries had territory that was no longer within Russian boundaries because of the Brest-Litovsk treaty?





# *Russian Revolution & After*

- **Russian Rev. began in 1917 in St. Petersburg**
  - **Led by V.L. Lenin's Bolsheviks**
- **Russian Civil War—1918-1921**
  - **Example of revolution for China & Cuba**
- **Afterwards Lenin announced program of land redistribution & nationalization of basic industries**
  - **Industry & agriculture declined**
- **New Economic Policy (NEP)—permitted some private ownership of peasant land & small businesses**
- **1923—Union of Soviet Socialist Republics formed**
  - **Soviets = council of workers**
  - **Under communist party**
  - **Competition in elections prohibited—communists won**
- **Lenin died in 1924—Stalin became leader**





Entrance to Lenin's Mausoleum; his body has been on public display since 1924

ЛЕНИН



# Stalinism

- **Concentrated on “socialism of one country” (Lenin said it would occur everywhere)**
- **Bureaucracy was loyal to Stalin**
- **Stalinism—policies:**
  - **Collectivization**—consolidated private farms into huge collective farms worked in common by farmers
    - Farmers to share proceeds of collective farms & also to submit portion of agric. products to gov.
    - Even after collect. accepted by farmers, lack of workers prevented it from being successful
  - **Purges**, or expulsion or execution of rivals
    - Targets were **kulaks** = wealthy peasants who refused to submit to collectivization
    - Millions of kulaks were executed or deported to Siberia
    - Attacks even on Catholic Church
  - **Five Year Plans**—concentrated on heavy industry
    - By end of 1930s—only behind Germany & U.S. in industry

**"We are fond of describing any peasant who has enough to eat as a kulak."**

**Gregory Zinoviev, Soviet politician,  
1924**

**During the purges in the Soviet Union, Orwell was appalled to find “numerous sensible and well-informed observers believing the most fantastic accounts of conspiracy, treachery, and sabotage” alleged in the Moscow purge trials.**

**George Orwell**



**"From a policy of limiting the  
exploitative tendencies of the  
kulaks, we have gone over to a  
policy of liquidating the kulaks as  
a class."**

**Stalin, 1930s— either sent to labor camps,  
executed, or deportation**



# Collectivization

## КОЛХОЗ В РАБОТЕ

[illegible]

\* Для работы в программе очень удобно использовать декарт, так как можно проводить измерения в разных проекциях детали.



# 5 Year Plans







# Collectivization Protests

**“Death solves all problems -  
no man, no problem.”**

**Joseph Stalin**

**“Since 1930 I had seen little evidence that the USSR was progressing toward anything that one could truly call socialism.” It was becoming “a hierarchical society, in which the rulers have no more reason to give up their power than any other ruling class.”**

**George Orwell**

**“It is enough that the people know there was an election. The people who cast the votes decide nothing. The people who count the votes decide everything.”**

**Joseph Stalin**

**“One death is a tragedy; a million is a statistic.”**

**Joseph Stalin**

STALIN







**Everyday in school children had to say, “thank Comrade Stalin for this happy life.”**

**“The Greatest Genius of All Times & Peoples”**





СПАСИБІ ПАРТІЇ,  
СПАСИБІ РІДНОМУ СТАЛІНУ  
ЗА ЩАСЛИВЕ, ВЕСЕЛЕ  
ДИТИНСТВО.

# Gulag

## Forced-labour construction projects in Stalin's Gulag system

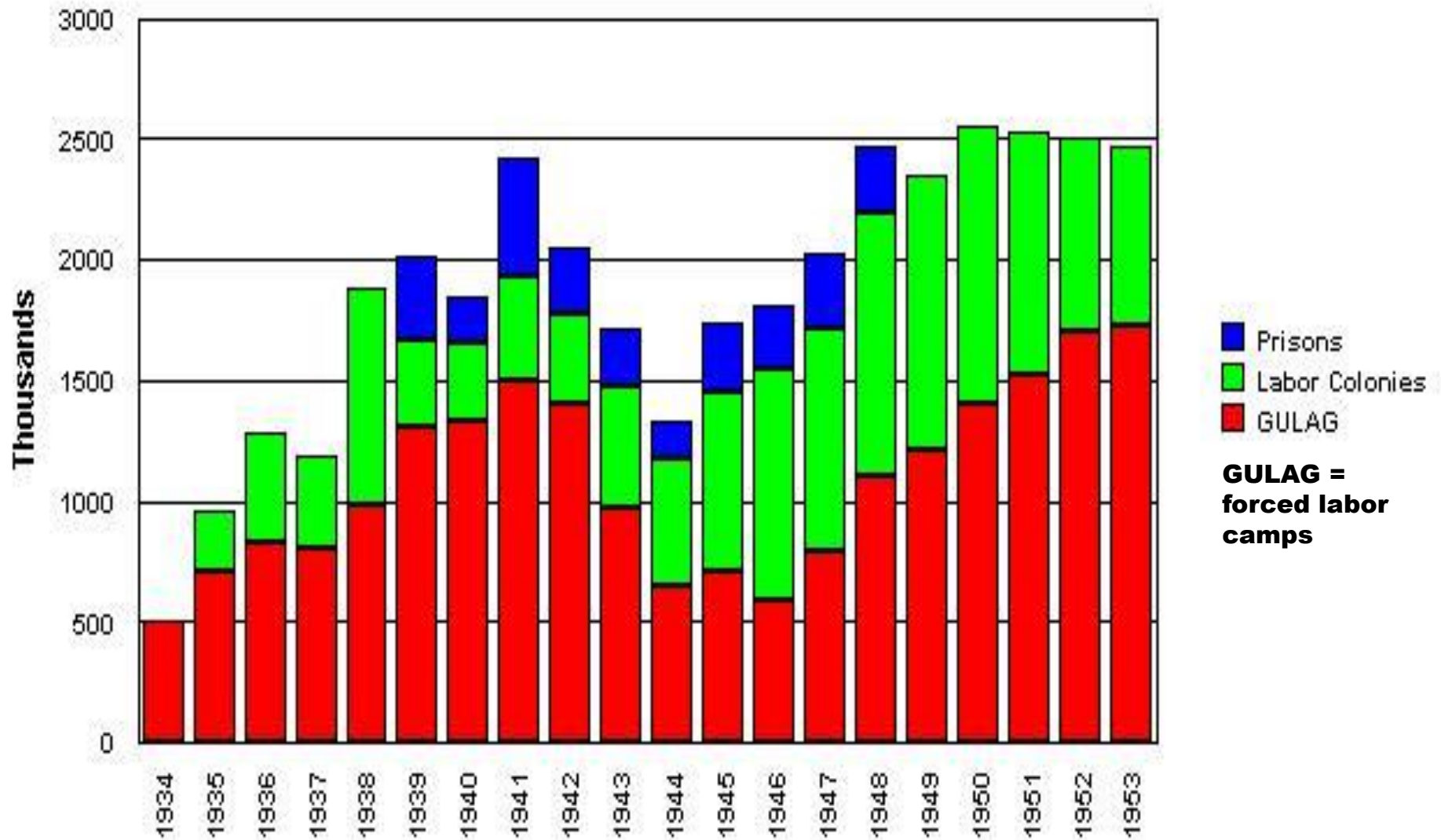
From the 1930s to 1950s, many of the Soviet Union's biggest industrial and transport facilities were built by prisoners at the cost of millions of lives





# Purges

Soviet Inmates And Prisoners, 1934-53



# *Soviet Economy*

- **Frequent shortages of goods**
- **Necessity of large armament industry**
- **Emphasis on heavy industrial goods**
- **Gov. control over all economic sectors**

# **20<sup>th</sup> C. Dictators**

- **After WWI a new form of dictatorship called totalitarianism emerged.**
- **Totalitarian governments aim at total control over every aspect of citizens' lives.**
- **The individual was seen as a servant of the state and was allowed few personal freedoms.**

# March on Rome, 1922



# Black Shirts







*Map: Operation World*



# Benito Mussolini





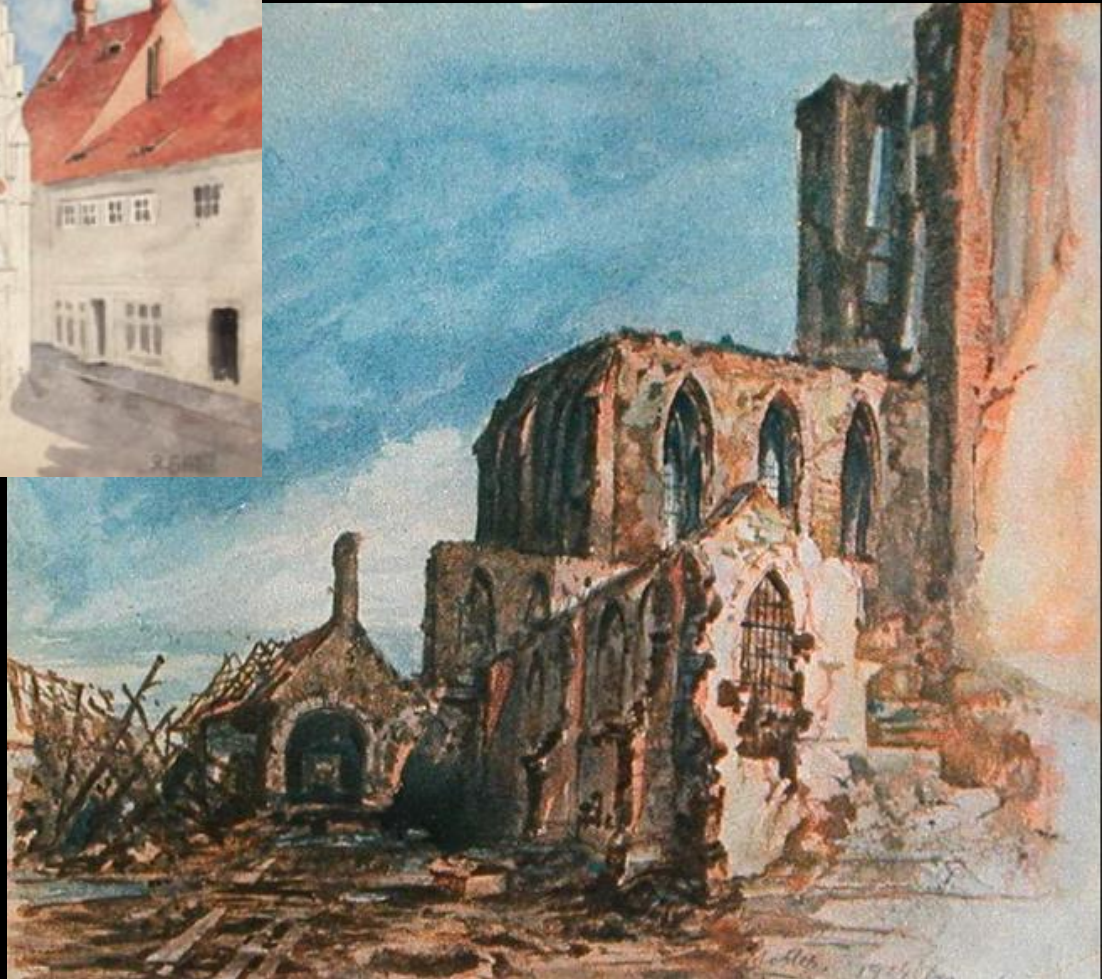
# Mussolini and Hitler



# Adolf Hitler



# Paintings by Hitler





# Beer Hall Putsch





